

100% of Actual Size
Pad Print



100% of Actual Size
Laser Engraving



Stainless Steel Engraves to a
Natural Etch

Please be aware that artwork will adhere to the shape of the product. Therefore, linear shapes that utilise the full print area may appear skewed from the side perspective due to the tapered nature of the product.

100% of Actual Size
Pad Print



100% of Actual Size
Laser Engraving



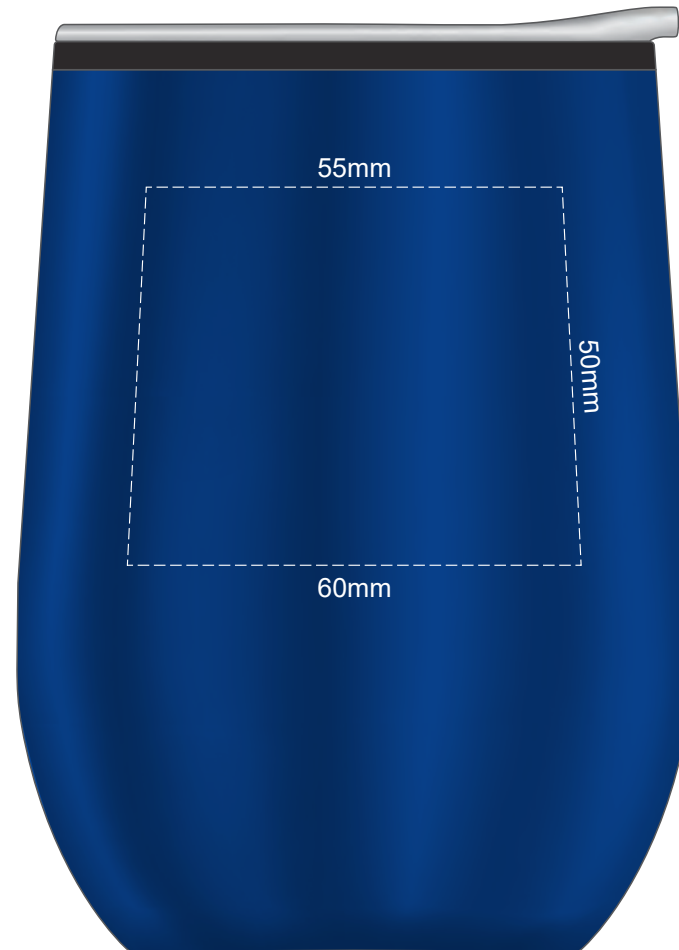
Engraves to a
Shiny Steel Finish

Please be aware that artwork will adhere to the shape of the product.
Therefore, linear shapes that utilise the full print area may appear skewed
from the side perspective due to the tapered nature of the product.

100% of Actual Size
Pad Print



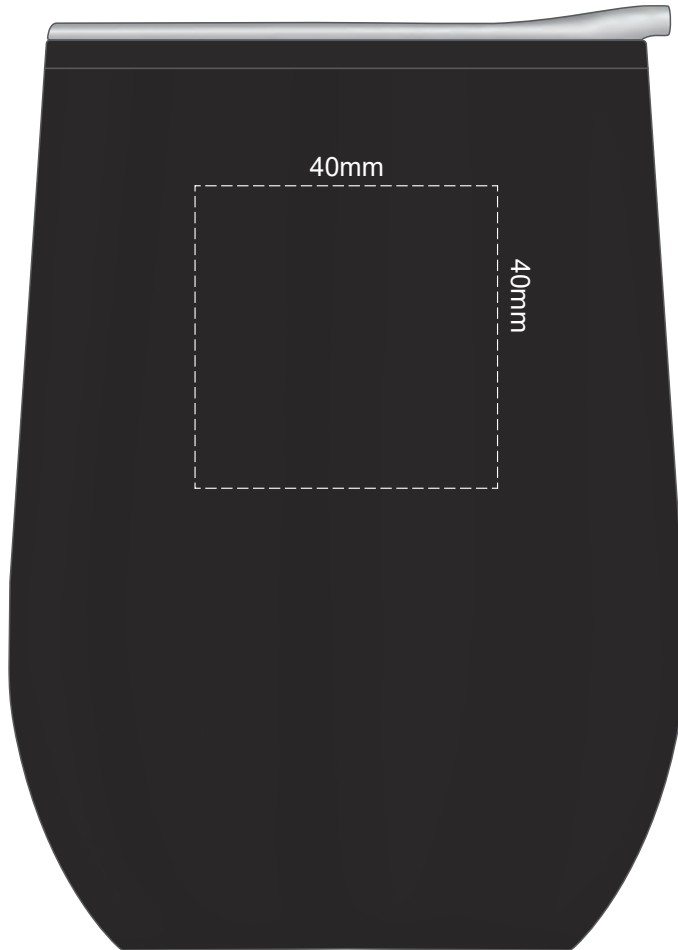
100% of Actual Size
Laser Engraving



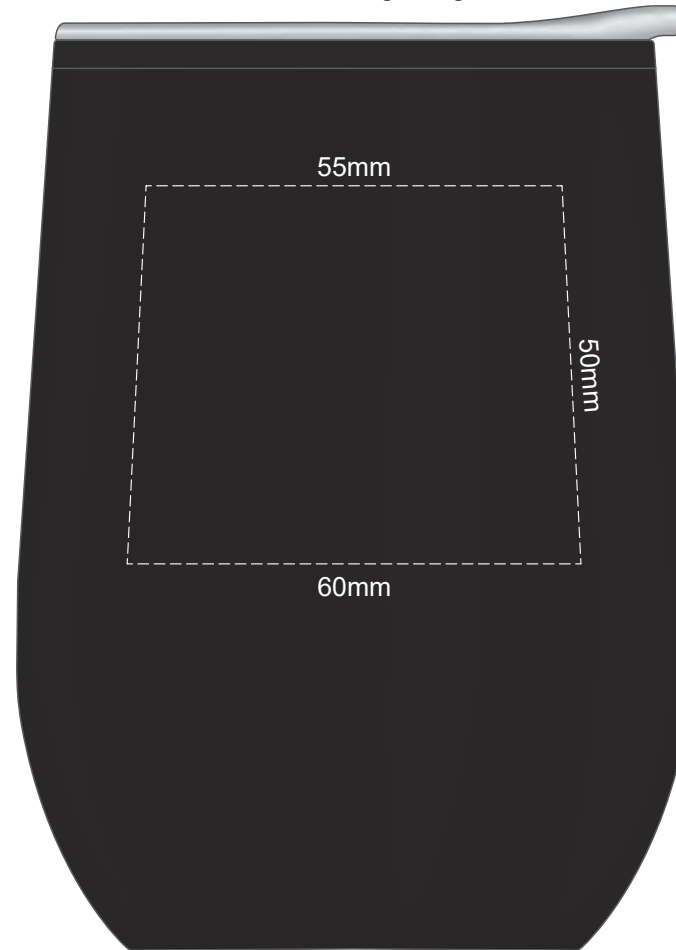
Engraves to a
Shiny Steel Finish

Please be aware that artwork will adhere to the shape of the product.
Therefore, linear shapes that utilise the full print area may appear skewed
from the side perspective due to the tapered nature of the product.

100% of Actual Size
Pad Print



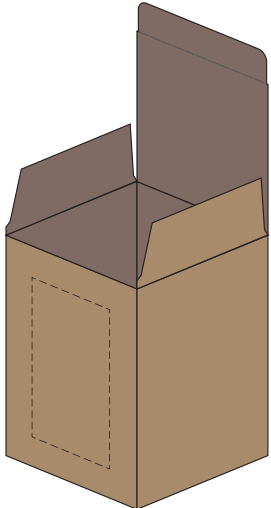
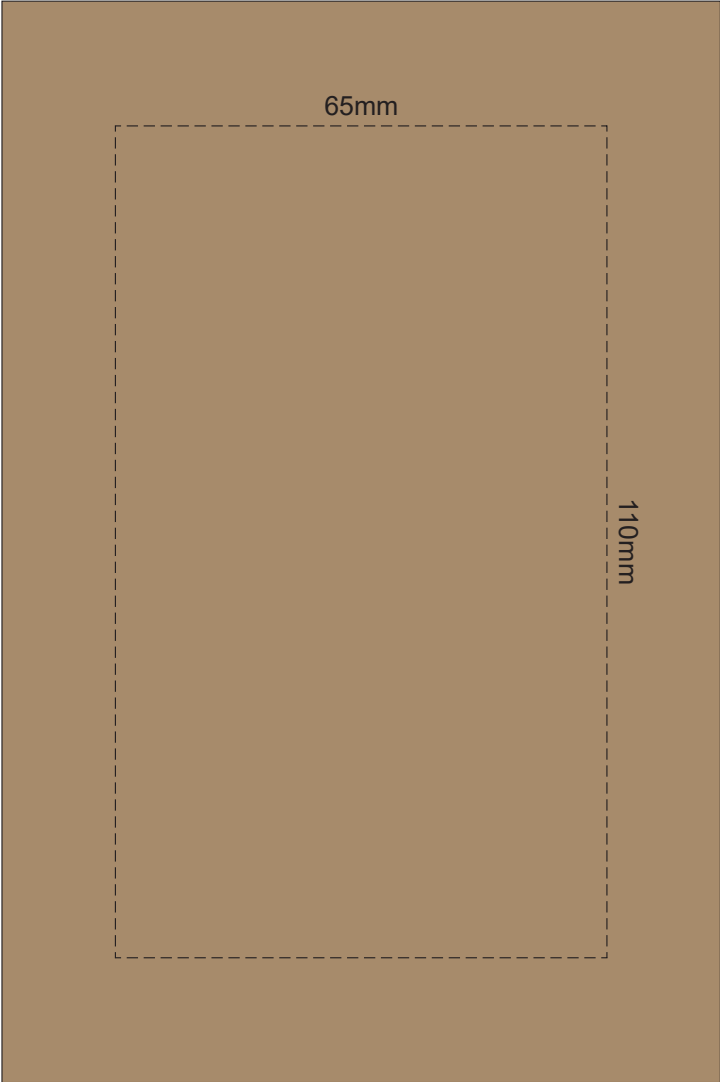
100% of Actual Size
Laser Engraving



 Engraves to a
Shiny Steel Finish

Please be aware that artwork will adhere to the shape of the product.
Therefore, linear shapes that utilise the full print area may appear skewed
from the side perspective due to the tapered nature of the product.

100% of Actual Size
Digital Packaging Print
FRONT

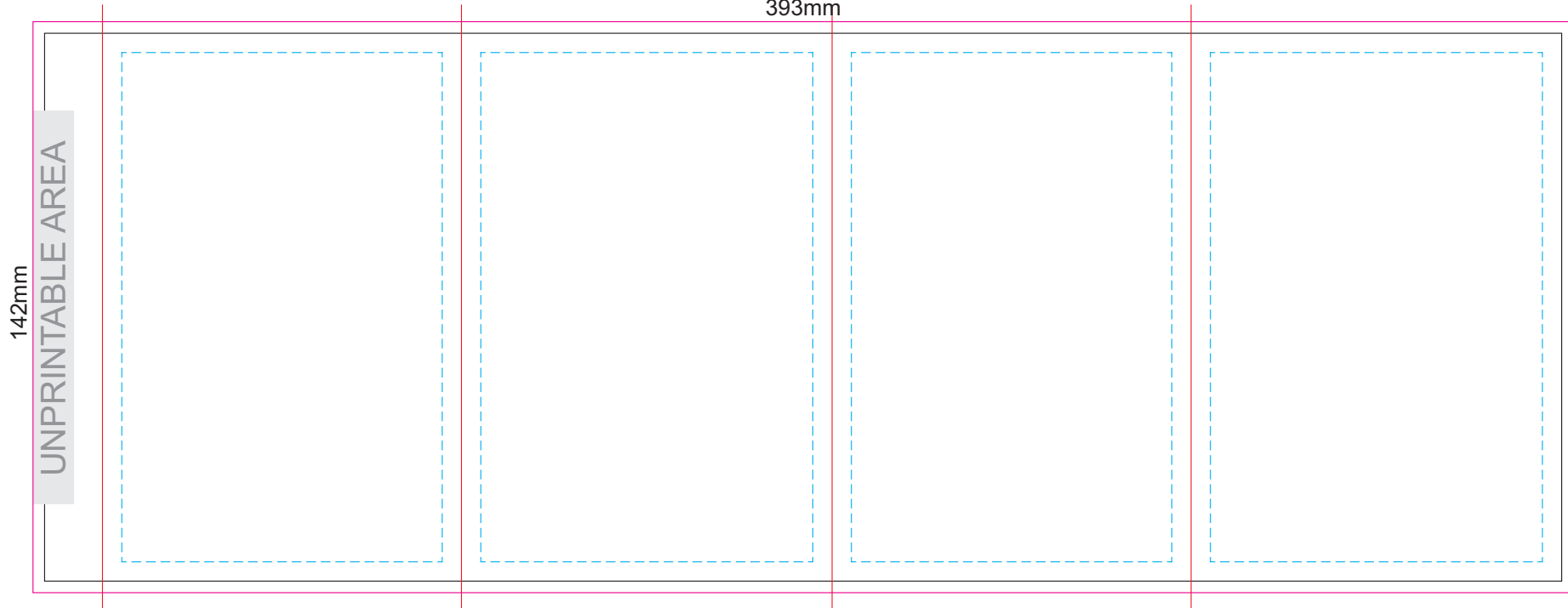


Artwork will be printed directly onto the product via CMYK printing (no white), colours will not be vibrant due to white ink not being available for this process.

GIFT BOX SLEEVE

60% of Actual Size
Digital Label

393mm



Blue Line = The SIGNIFICANT PRINT AREA
(Keep all critical images & text within this box)

Black Line = Maximum print area

Pink Line = Bleed off to here

Red Line = Fold Line